

Computational Intelligence

Winter Term 2019/20

Prof. Dr. Günter Rudolph

Lehrstuhl für Algorithm Engineering (LS 11)

Fakultät für Informatik

TU Dortmund

- Fuzzy relations
- Fuzzy logic
 - Linguistic variables and terms
 - Inference from fuzzy statements

relations with conventional sets $\mathcal{X}_1, \mathcal{X}_2, \dots, \mathcal{X}_n$:

$$R(\mathcal{X}_1, \mathcal{X}_2, \dots, \mathcal{X}_n) \subseteq \mathcal{X}_1 \times \mathcal{X}_2 \times \dots \times \mathcal{X}_n$$

notice that cartesian product is a **set!**

⇒ all set operations remain valid!

crisp membership function (of x to relation R)

$$R(x_1, x_2, \dots, x_n) = \begin{cases} 1 & \text{if } (x_1, x_2, \dots, x_n) \in R \\ 0 & \text{otherwise} \end{cases}$$

Definition

Fuzzy relation = fuzzy set over crisp cartesian product $\mathcal{X}_1 \times \mathcal{X}_2 \times \dots \times \mathcal{X}_n$ ■

→ each tuple (x_1, \dots, x_n) has a degree of membership to relation

→ degree of membership expresses *strength of relationship* between elements of tuple

appropriate representation: n-dimensional membership matrix

example: Let $X = \{ \text{New York, Paris} \}$ and $Y = \{ \text{Beijing, New York, Dortmund} \}$.

relation $R = \text{"very far away"}$

membership matrix →

relation R	New York	Paris
Beijing	1.0	0.9
New York	0.0	0.7
Dortmund	0.6	0.3

Definition

Let $R(X, Y)$ be a fuzzy relation with membership matrix R . The **inverse fuzzy relation** to $R(X, Y)$, denoted $R^{-1}(Y, X)$, is a relation on $Y \times X$ with membership matrix $R^{-1} = R'$. ■

Remark: R' is the transpose of membership matrix R .

Evidently: $(R^{-1})^{-1} = R$ since $(R')' = R$

Definition

Let $P(X, Y)$ and $Q(Y, Z)$ be fuzzy relations. The operation \circ on two relations, denoted $P(X, Y) \circ Q(Y, Z)$, is termed **max-min-composition** iff

$$R(x, z) = (P \circ Q)(x, z) = \max_{y \in Y} \min \{ P(x, y), Q(y, z) \}. \quad \blacksquare$$

Theorem

- max-min composition on relations is associative.
- max-min composition on relations is not commutative.
- $(P(X, Y) \circ Q(Y, Z))^{-1} = Q^{-1}(Z, Y) \circ P^{-1}(Y, X)$.

membership matrix of max-min composition
determinable via “fuzzy matrix multiplication”: $R = P \circ Q$

fuzzy matrix multiplication $r_{ij} = \max_k \min \{ p_{ik}, q_{kj} \}$

crisp matrix multiplication $r_{ij} = \sum_k p_{ik} \cdot q_{kj}$

further methods for realizing compositions of relations:

max-prod composition

$$(P \odot Q)(x, z) = \max_{y \in \mathcal{Y}} \{ P(x, y) \cdot Q(y, z) \}$$

generalization: sup-t composition

$$(P \circ Q)(x, z) = \sup_{y \in \mathcal{Y}} \{ t(P(x, y), Q(y, z)) \}, \quad \text{where } t(\cdot, \cdot) \text{ is a t-norm}$$

e.g.: $t(a, b) = \min\{a, b\} \Rightarrow$ max-min-composition
 $t(a, b) = a \cdot b \Rightarrow$ max-prod-composition

Binary fuzzy relations on $X \times X$: properties

- reflexive** $\Leftrightarrow \forall x \in X: R(x, x) = 1$
- irreflexive** $\Leftrightarrow \exists x \in X: R(x, x) < 1$
- antireflexive** $\Leftrightarrow \forall x \in X: R(x, x) < 1$
- symmetric** $\Leftrightarrow \forall (x, y) \in X \times X: R(x, y) = R(y, x)$
- asymmetric** $\Leftrightarrow \exists (x, y) \in X \times X: R(x, y) \neq R(y, x)$
- antisymmetric** $\Leftrightarrow \forall (x, y) \in X \times X: R(x, y) \neq R(y, x)$
- transitive** $\Leftrightarrow \forall (x, z) \in X \times X: R(x, z) \geq \max_{y \in Y} \min \{ R(x, y), R(y, z) \}$
- intransitive** $\Leftrightarrow \exists (x, z) \in X \times X: R(x, z) < \max_{y \in Y} \min \{ R(x, y), R(y, z) \}$
- antitransitive** $\Leftrightarrow \forall (x, z) \in X \times X: R(x, z) < \max_{y \in Y} \min \{ R(x, y), R(y, z) \}$

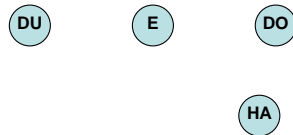
actually, here: max-min-transitivity (\rightarrow in general: sup-t-transitivity)

binary fuzzy relation on X x X: example

Let X be the set of all cities in Germany.

Fuzzy relation R is intended to represent the concept of „very close to“.

- $R(x,x) = 1$, since every city is certainly very close to itself.
⇒ **reflexive**
- $R(x,y) = R(y,x)$: if city x is very close to city y, then also vice versa.
⇒ **symmetric**
- $R(\text{Dortmund, Essen}) = 0.8$
 $R(\text{Essen, Duisburg}) = 0.7$
 $R(\text{Dortmund, Duisburg}) = 0.5$
 $R(\text{Dortmund, Hagen}) = 0.9$
 ⇒ **intransitive**



crisp:

relation R is equivalence relation ⇔ R reflexive, symmetric, transitive

fuzzy:

relation R is similarity relation ⇔ R reflexive, symmetric, (max-min-) transitive

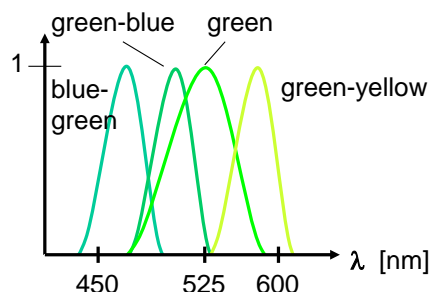
linguistic variable:

variable that can attain several values of linguistic / verbal nature

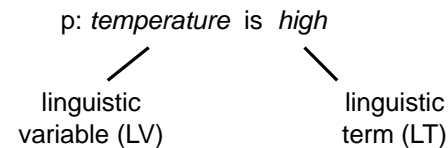
e.g.: **color** can attain values **red, green, blue, yellow, ...**

values (red, green, ...) of linguistic variable are called **linguistic terms**

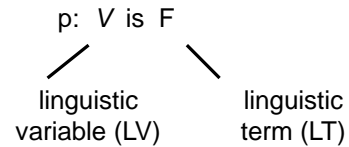
linguistic terms are associated with fuzzy sets



fuzzy proposition



- LV may be associated with several LT : *high, medium, low, ...*
- *high, medium, low* temperature are fuzzy sets over numerical scale of crisp temperatures
- trueness of fuzzy proposition „temperature is high“ for a given **concrete crisp** temperature value v is interpreted as equal to the degree of membership *high(v)* of the fuzzy set *high*

fuzzy proposition

actually:

p: V is F(v)

and

$T(p) = F(v)$ for a concrete crisp value v

trueness(p)

establishes connection between *degree of membership* of a fuzzy set and the *degree of trueness* of a fuzzy proposition

fuzzy proposition

p: IF *heating* is *hot*, THEN *energy consumption* is *high*

```

  graph TD
    A["p: IF heating is hot, THEN energy consumption is high"]
    A --- B["LV"]
    A --- C["LT"]
    A --- D["LV"]
    A --- E["LT"]
  
```

expresses relation between

- temperature of heating and
- quantity of energy consumption

p: (*heating*, *energy consumption*) ∈ R relation

fuzzy proposition

p: IF X is A, THEN Y is B

```

  graph TD
    A["p: IF X is A, THEN Y is B"]
    A --- B["LV"]
    A --- C["LT"]
    A --- D["LV"]
    A --- E["LT"]
  
```

How can we determine / express degree of trueness T(p) ?

- For crisp, given values x, y we know A(x) and B(y)
- A(x) and B(y) must be processed to single value via relation R
- $R(x, y) = \text{function}(A(x), B(y))$ is fuzzy set over $X \times Y$
- as before: interpret T(p) as degree of membership $R(x,y)$

fuzzy proposition

p: IF X is A, THEN Y is B

A is fuzzy set over X

B is fuzzy set over Y

R is fuzzy set over $X \times Y$

$\forall (x,y) \in X \times Y: R(x, y) = \text{Imp}(A(x), B(y))$

What is $\text{Imp}(\cdot, \cdot)$?

\Rightarrow „appropriate“ fuzzy implication $[0,1] \times [0,1] \rightarrow [0,1]$

assumption: we know an „appropriate“ $\text{Imp}(a,b)$.

How can we determine the degree of trueness $T(p)$?

example:

let $\text{Imp}(a, b) = \min\{ 1, 1 - a + b \}$ and consider fuzzy sets

A:

x_1	x_2	x_3
0.1	0.8	1.0

B:

y_1	y_2
0.5	1.0

\Rightarrow

R	x_1	x_2	x_3
y_1	1.0	0.7	0.5
y_2	1.0	1.0	1.0

z.B.
 $R(x_2, y_1) = \text{Imp}(A(x_2), B(y_1)) = \text{Imp}(0.8, 0.5) = \min\{1.0, 0.7\} = 0.7$

and $T(p)$ for (x_2, y_1) is $R(x_2, y_1) = 0.7$ ■

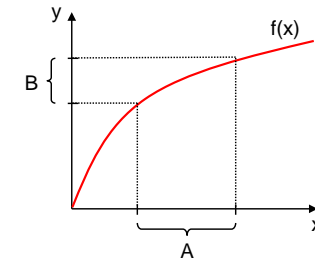
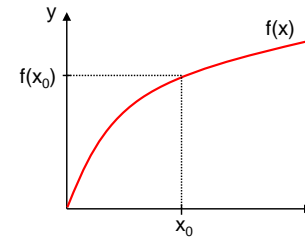
toward inference from fuzzy statements:

• let $\forall x, y: y = f(x)$.

IF $X = x_0$ THEN $Y = f(x_0)$

• IF $X \in A$ THEN $Y \in B = \{ y \in \mathcal{Y} : y = f(x), x \in A \}$

crisp case:
functional relationship



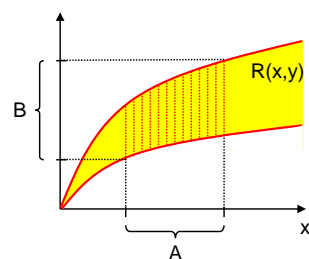
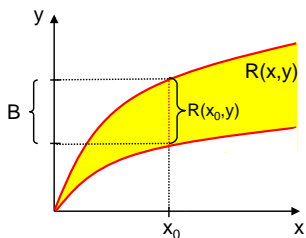
toward inference from fuzzy statements:

• let relationship between x and y be a relation R on $\mathcal{X} \times \mathcal{Y}$

IF $X = x_0$ THEN $Y \in B = \{ y \in \mathcal{Y} : (x_0, y) \in R \}$

• IF $X \in A$ THEN $Y \in B = \{ y \in \mathcal{Y} : (x, y) \in R, x \in A \}$

crisp case:
relational relationship



toward inference from fuzzy statements:

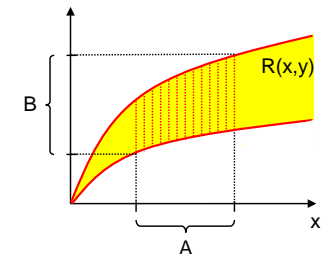
IF $X \in A$ THEN $Y \in B = \{ y \in \mathcal{Y} : (x, y) \in R, x \in A \}$

also expressible via characteristic functions of sets A, B, R :

$B(y) = 1$ iff $\exists x: A(x) = 1$ and $R(x, y) = 1$

$\Leftrightarrow \exists x: \min\{ A(x), R(x, y) \} = 1$

$\Leftrightarrow \max_{x \in \mathcal{X}} \min\{ A(x), R(x, y) \} = 1$



$\forall y \in \mathcal{Y}: B(y) = \max_{x \in \mathcal{X}} \min\{ A(x), R(x, y) \}$

inference from fuzzy statements

Now: A', B' fuzzy sets over X resp. Y

Assume: R(x,y) and A'(x) are given.

Idea: Generalize characteristic function of B(y) to membership function B'(y)

$$\forall y \in Y: B(y) = \max_{x \in X} \min \{ A(x), R(x, y) \} \quad \text{characteristic functions}$$

$$\forall y \in Y: B'(y) = \sup_{x \in X} \min \{ A'(x), R(x, y) \} \quad \text{membership functions}$$

composition rule of inference (in matrix form): $B^T = A \circ R$

inference from fuzzy statements

- conventional: modus ponens

$$\begin{array}{l} a \Rightarrow b \\ \underline{a} \\ b \end{array}$$

- fuzzy: generalized modus ponens (GMP)

$$\begin{array}{l} \text{IF } X \text{ is } A, \text{ THEN } Y \text{ is } B \\ \underline{X \text{ is } A'} \\ Y \text{ is } B' \end{array}$$

e.g.: IF heating is hot, THEN energy consumption is high
 heating is warm
 energy consumption is normal

example: GMP

consider A:

x ₁	x ₂	x ₃
0.5	1.0	0.6

B:

y ₁	y ₂
1.0	0.4

with the rule: IF X is A THEN Y is B

given fact A' ⇒ R

x ₁	x ₂	x ₃
0.6	0.9	0.7

R	x ₁	x ₂	x ₃
y ₁	1.0	1.0	1.0
y ₂	0.9	0.4	0.8

with Imp(a,b) = min{1, 1-a+b }

thus: A' ∘ R = B' (0.6 0.9 0.7) ∘ (1.0 0.9 / 1.0 0.4 / 1.0 0.8) = (0.9 0.7)

with max-min-composition

inference from fuzzy statements

- conventional: modus tollens

$$\begin{array}{l} a \Rightarrow b \\ \underline{\bar{b}} \\ \bar{a} \end{array}$$

- fuzzy: generalized modus tollens (GMT)

$$\begin{array}{l} \text{IF } X \text{ is } A, \text{ THEN } Y \text{ is } B \\ \underline{Y \text{ is } B'} \\ X \text{ is } A' \end{array}$$

e.g.: IF heating is hot, THEN energy consumption is high
 energy consumption is normal
 heating is warm

example: GMT

consider

A:

x_1	x_2	x_3
0.5	1.0	0.6

B:

y_1	y_2
1.0	0.4

with the rule: IF X is A THEN Y is B

given fact

B':

y_1	y_2
0.9	0.7

⇒

R

	x_1	x_2	x_3
y_1	1.0	1.0	1.0
y_2	0.9	0.4	0.8

with $\text{Imp}(a,b) = \min\{1, 1-a+b\}$

thus: $B' \circ R^{-1} = A'$ $\left(\begin{matrix} 0.9 & 0.7 \end{matrix} \right) \circ \left(\begin{matrix} 1.0 & 1.0 & 1.0 \\ 0.9 & 0.4 & 0.8 \end{matrix} \right) = \left(\begin{matrix} 0.9 & 0.9 & 0.9 \end{matrix} \right)$

with max-min-composition



inference from fuzzy statements

- conventional: hypothetical syllogism

$$\begin{matrix} a \Rightarrow b \\ b \Rightarrow c \\ \hline a \Rightarrow c \end{matrix}$$

- fuzzy: generalized HS

$$\begin{matrix} \text{IF } X \text{ is } A, \text{ THEN } Y \text{ is } B \\ \text{IF } Y \text{ is } B, \text{ THEN } Z \text{ is } C \\ \hline \text{IF } X \text{ is } A, \text{ THEN } Z \text{ is } C \end{matrix}$$

e.g.: IF heating is hot, THEN energy consumption is high
IF energy consumption is high, THEN living is expensive
 IF heating is hot, THEN living is expensive

example: GHS

let fuzzy sets A(x), B(x), C(x) be given

⇒ determine the three relations

$$\begin{matrix} R_1(x,y) = \text{Imp}(A(x),B(y)) \\ R_2(y,z) = \text{Imp}(B(y),C(z)) \\ R_3(x,z) = \text{Imp}(A(x),C(z)) \end{matrix}$$

and express them as matrices R_1, R_2, R_3

We say:

GHS is valid if $R_1 \circ R_2 = R_3$

So, ... what makes sense for $\text{Imp}(\cdot, \cdot)$?

$\text{Imp}(a,b)$ ought to express fuzzy version of implication ($a \Rightarrow b$)

conventional: $a \Rightarrow b$ identical to $\bar{a} \vee b$

But how can we calculate with fuzzy “boolean” expressions?

request: must be compatible to crisp version (and more) for $a,b \in \{0, 1\}$

a	b	$a \wedge b$	$t(a,b)$
0	0	0	0
0	1	0	0
1	0	0	0
1	1	1	1

a	b	$a \vee b$	$s(a,b)$
0	0	0	0
0	1	1	1
1	0	1	1
1	1	1	1

a	\bar{a}	$c(a)$
0	1	1
1	0	0

So, ... what makes sense for $\text{Imp}(\cdot, \cdot)$?

1st approach: S implications

conventional: $a \Rightarrow b$ identical to $\bar{a} \vee b$

fuzzy: $\text{Imp}(a, b) = s(c(a), b)$

2nd approach: R implications

conventional: $a \Rightarrow b$ identical to $\max\{x \in \{0, 1\} : a \wedge x \leq b\}$

fuzzy: $\text{Imp}(a, b) = \max\{x \in [0, 1] : t(a, x) \leq b\}$

3rd approach: QL implications

conventional: $a \Rightarrow b$ identical to $\bar{a} \vee b \equiv \bar{a} \vee (a \wedge b)$ law of absorption

fuzzy: $\text{Imp}(a, b) = s(c(a), t(a, b))$ (dual tripel ?)

example: S implication $\text{Imp}(a, b) = s(c_s(a), b)$ (c_s : std. complement)

1. Kleene-Dienes implication

$s(a, b) = \max\{a, b\}$ (standard) $\text{Imp}(a, b) = \max\{1-a, b\}$

2. Reichenbach implication

$s(a, b) = a + b - ab$ (algebraic sum) $\text{Imp}(a, b) = 1 - a + ab$

3. Łukasiewicz implication

$s(a, b) = \min\{1, a + b\}$ (bounded sum) $\text{Imp}(a, b) = \min\{1, 1 - a + b\}$

example: R implicationen $\text{Imp}(a, b) = \max\{x \in [0, 1] : t(a, x) \leq b\}$

1. Gödel implication

$t(a, b) = \min\{a, b\}$ (std.) $\text{Imp}(a, b) = \begin{cases} 1 & , \text{ if } a \leq b \\ b & , \text{ else} \end{cases}$

2. Goguen implication

$t(a, b) = ab$ (algeb. product) $\text{Imp}(a, b) = \begin{cases} 1 & , \text{ if } a \leq b \\ \frac{b}{a} & , \text{ else} \end{cases}$

3. Łukasiewicz implication

$t(a, b) = \max\{0, a + b - 1\}$ (bounded diff.) $\text{Imp}(a, b) = \min\{1, 1 - a + b\}$

example: QL implication $\text{Imp}(a, b) = s(c(a), t(a, b))$

1. Zadeh implication

$t(a, b) = \min\{a, b\}$ (std.) $\text{Imp}(a, b) = \max\{1 - a, \min\{a, b\}\}$
 $s(a, b) = \max\{a, b\}$ (std.)

2. „NN“ implication \odot (Klir/Yuan 1994)

$t(a, b) = ab$ (algebr. prd.) $\text{Imp}(a, b) = 1 - a + a^2b$
 $s(a, b) = a + b - ab$ (algebr. sum)

3. Kleene-Dienes implication

$t(a, b) = \max\{0, a + b - 1\}$ (bounded diff.) $\text{Imp}(a, b) = \max\{1 - a, b\}$
 $s(a, b) = \min\{1, a + b\}$ (bounded sum)

axioms for fuzzy implications

- | | |
|--|--------------------------|
| 1. $a \leq b$ implies $\text{Imp}(a, x) \geq \text{Imp}(b, x)$ | monotone in 1st argument |
| 2. $a \leq b$ implies $\text{Imp}(x, a) \leq \text{Imp}(x, b)$ | monotone in 2nd argument |
| 3. $\text{Imp}(0, a) = 1$ | dominance of falseness |
| 4. $\text{Imp}(1, b) = b$ | neutrality of trueness |
| 5. $\text{Imp}(a, a) = 1$ | identity |
| 6. $\text{Imp}(a, \text{Imp}(b, x)) = \text{Imp}(b, \text{Imp}(a, x))$ | exchange property |
| 7. $\text{Imp}(a, b) = 1$ iff $a \leq b$ | boundary condition |
| 8. $\text{Imp}(a, b) = \text{Imp}(c(b), c(a))$ | contraposition |
| 9. $\text{Imp}(\cdot, \cdot)$ is continuous | continuity |

Caution!

Not all S-, R-, QL- implications obey all axioms for fuzzy implications!

Implication	Valid Axioms
Kleene-Dienes	1 2 3 4 – 6 – 8 9
Reichenbach	1 2 3 4 – 6 – 8 9
Łukasiewicz	1 2 3 4 5 6 7 8 9 ←
Gödel	1 2 3 4 5 6 7 – –
Goguen	1 2 3 4 5 6 7 – 9
Zadeh	1 2 3 4 – – – – 9
Klir-Yuan	– 2 3 4 – – – – 9

characterization of fuzzy implication

Theorem:

$\text{Imp}: [0,1] \times [0,1] \rightarrow [0,1]$ satisfies axioms 1 - 9 for fuzzy implications for a certain fuzzy complement $c(\cdot) \Leftrightarrow$

\exists strictly monotone increasing, continuous function $f: [0,1] \rightarrow [0, \infty)$ with

- $f(0) = 0$
- $\forall a, b \in [0,1]: \text{Imp}(a, b) = f^{-1}(\min\{f(1) - f(a) + f(b), f(1)\})$
- $\forall a \in [0,1]: c(a) = f^{-1}(f(1) - f(a))$

Proof: Smets & Magrez (1987), p. 337f. ■

examples: (in tutorial)

choosing an „appropriate“ fuzzy implication ...

apt quotation: (Klir & Yuan 1995, p. 312)

„To select an appropriate fuzzy implication for approximate reasoning under each particular situation is a difficult problem.“

guideline:

GMP, GMT, GHS should be compatible with MP, MT, HS for fuzzy implication in calculations with relations:
 $B(y) = \sup \{ t(A(x), \text{Imp}(A(x), B(y))) : x \in X \}$

example:

Gödel implication for t-norm = bounded difference